

Dear Parents

Welcome back to a new term at Cedars Primary and another year.

School Travel

As you know we have been awarded from Milton Keynes Council £6000 to improve our cycle storage. We wish to try and bring about change in home-to-school travel to cut traffic congestion and pollution as well as encourage more children to take regular exercise.

To set in motion these changes we are developing a School Travel Plan that aims to increase levels of walking and cycling.

We would be most grateful if you would complete the Travel Survey (paper copy sent home) so we can gain your views. Please return the Travel Survey to your child's teacher by **Friday 29th January 2016**.



Sports Update

On Wednesday 20th January the Yr5/6 Boys Football team will play their final set of league matches at Tattenhoe.

After a very good season they still have a chance to win the league. Also on Friday 22nd January they will be competing in a 6 a-side competition which if successful could mean they play in front of 90,000 at Wembley. We wish them the best of luck in both competitions!

Morning Punctuality



I would like to remind everyone that the **start of school is 8:55am and children should be in their classroom by this time ready to start their learning.** The doors open at 8:45am to enable children to arrive within this 10 minute 'window' and teachers set morning work and activities for children to complete in this time. If children arrive after 8:55 am they will be marked late in the register and any children who arrive after 9:00 am should report directly to the school office.

Attitudes and Behaviour

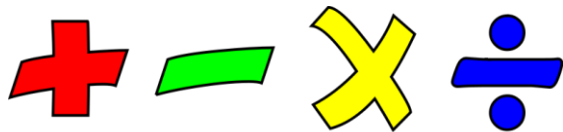
We have recently held focused discussions with all of the children on their views of attitudes and behaviour at Cedars Primary. I am pleased to inform you that the children told us:

- they thought behaviour in lessons is typically good as children follow 'The Cedars' Way' and keep all of their Golden Time
- they like Golden Time and the new 'Class Award' stickers from Teachers
- all staff expect them to follow 'The Cedars' Way'

- there is always someone in school they can talk to if they have any problems and staff take their problems seriously and do something to help
- they are looking forward to having Play and Sport Leaders from this term to make playtime and lunchtime more enjoyable

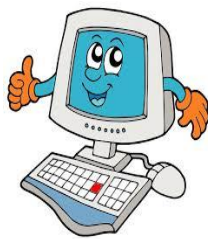
Maths Workshop Feedback

We would like to thank you for your very positive feedback following the recent Maths Workshop. If you were not able to attend you can find our Maths Calculation Policy on our website under the section 'Curriculum' in the 'Maths' section. You will find this information very useful when supporting your child at home with their maths homework.



E-Safety Workshop

Miss Fawcett is planning an E-Safety Workshop for Parents which will take place on **Tuesday 1st March at 9:00am**. You will have the opportunity to participate in an E-Safety lesson with your child and receive advice about key esafety topics. Please make a note of this date and details will follow later.



PE Kit

Please can we remind you that your child needs indoor and outdoor PE kit in school all year. The children will have their PE lessons outside whatever the weather! You can find our uniform list in your child's Home/School Diary as well as on our website.

Achievers of the Week

Well done to the following children for being 'Achievers of the Week':

Joshua - for being a thoughtful and kind member of the class.

Luca - always following 'The Cedars' Way'.

Taym - a fabulous independent recount of the Queen's visit.

All of Year 3/4 - a fantastic attitude about the new topic and working hard.

5CF Class - working together as a team, supporting each other and following 'The Cedars' Way'.

Alex - being enthusiastic about the new topic.

Alfie - a positive start to the new term.

Imogen - working hard, especially with comprehension.

Poet Visit

On Thursday 11th February, the poet, Neal Zetter, will be visiting Cedars Primary School. All the children will participate in one of his performances, and groups will be working with him throughout the day. There will also be the opportunity to buy one of his books and have it signed! Further details will follow shortly.

Staff Car Park

Please can I remind parents that the car park is for the use of staff members and the school taxi only. Parents should not use the car park at any time of the day.

Parent Mail

ParentMail enables us to give reminders and updates to parents more quickly and is often more reliable than the usual 'pupil post'! If you are not already registered please contact the school office who will be able to help you. Thank

you in advance for your support with this - if we could get everyone signed up that would be great!

Changes

Term Dates and Inset Days- change to published dates.

We have been advised by Milton Keynes Council that we should arrange our Staff Training Days within School holidays from September 2016. Therefore School will be open for Pupils to attend on the following dates:

	Open on the morning of:	Close at the end of the afternoon session on:
Autumn Term 2016	Monday 5 th September	Friday 21 st October
	Tuesday 1 st November	Friday 16 th December
Spring Term 2017	Wednesday 4 th January	Friday 10 th February
	Monday 20 th February	Friday 31 st March
Summer Term 2017	Tuesday 18 th April	Friday 26 th May
	Monday 5 th June	Friday 21 st July

School will also be closed on **Monday 1st May 2017** - Spring Bank Holiday. Please disregard previously published term dates.

And finally ... we very much hope that the winter weather in the north of the country does not extend to Milton Keynes - but if it does we are as

prepared as can be. We have snow shovels and lots of grit - but please do keep an eye on the forecast and remember to keep to cleared pathways. Wellies, hats, scarves at the ready!

We would encourage all parents to sign up to the free text service from Milton Keynes Council, that will inform you if it becomes necessary to close the school at any point, due to adverse weather conditions or for other reasons. This can be done via the following website:

www.milton-keynes.gov.uk/closures

Yours sincerely
Lisa Munday